

# \$715,000 - 204 West Creek Court, Chestermere

MLS® #A2194078

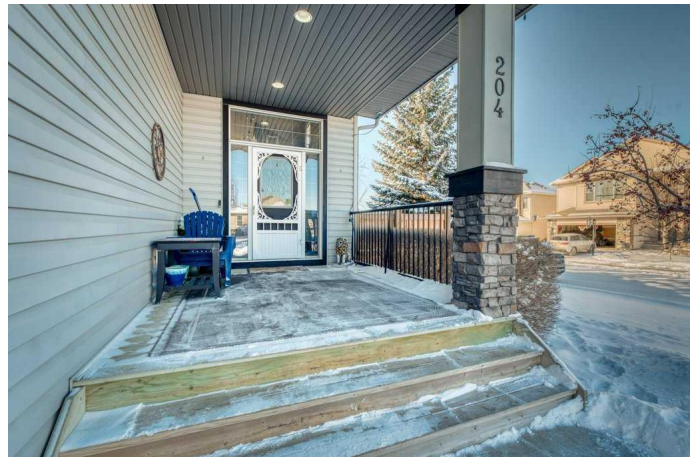
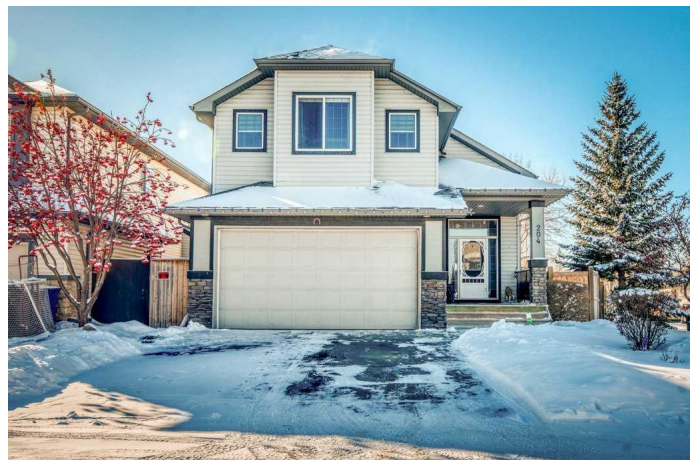
**\$715,000**

2 Bedroom, 3.00 Bathroom, 1,721 sqft

Residential on 0.11 Acres

West Creek, Chestermere, Alberta

Pride of ownership at it's finest. This stunning custom home offers 2,631 sq. ft. of developed living space, including a fully finished walkout basement. Thoughtfully designed for comfort and convenience, it boasts modern updates and premium features throughout. On the main level a spacious foyer welcomes you with access to the laundry room and heated garage.Â Â Just a few steps up, the bright and airy main living area is enhanced by vaulted ceilings, oversized windows, and a kitchen skylight.Â Â A striking three-sided fireplace anchors the open-concept space.Â Â The kitchen features ample cabinetry, counter space, and new appliances & fixtures.Â Â Adjacent to the dining area, a large wrapped deck with a natural gas hookup provides the perfect outdoor retreat.Â Â This level also includes a bedroom and a 4-piece bathroom. On the upper Level youâ€™™ll find the grand primary suite which boasts a walk-in closet and a private ensuite with oversized spa like walk in shower.Â The fully finished walkout basement has large windows that allow for plenty of natural light, and in-floor heating ensuring year-round comfort. Also find a 3-piece bathroom, large crawl space for extra storage, a fridge, and rough-in for a bar. With its spacious layout, there is potential to develop two additional bedrooms, making it a great option for extra living space. Walk out to a beautiful stamped concrete deck in the serene backyard, fully fenced providing tons of privacy. This home is situated on a large



corner lot with RV parking.. IncludesÂ Â two gazebos, a propane firepit, a shed, and a rain barrel.Â Â Several new updates to this already well cared for home include:Â Â Roof (2021) Furnace (2019) Hot water tank (2020) Water softener (2020) New flooring (2021) Fresh paint (2022)Additional home highlights include Central air conditioning and central vacuum system. This home is move-in ready with immediate possession available!Â Â The perfect blend of comfort, style, and functionality. Book a viewing today!Â Â Donâ€™t forget to check out the virtual tour.

Built in 2003

**Essential Information**

MLS® #	A2194078
Price	\$715,000
Bedrooms	2
Bathrooms	3.00
Full Baths	3
Square Footage	1,721
Acres	0.11
Year Built	2003
Type	Residential
Sub-Type	Detached
Style	Bi-Level
Status	Active

**Community Information**

Address	204 West Creek Court
Subdivision	West Creek
City	Chestermere
County	Chestermere
Province	Alberta
Postal Code	T1X 1L8

**Amenities**

Parking Spaces	4
Parking	Double Garage Attached, Parking Pad, RV Access/Parking
# of Garages	2

## Interior

Interior Features	Ceiling Fan(s), Double Vanity, High Ceilings, Kitchen Island, Pantry, Storage, Walk-In Closet(s), Skylight(s), Separate Entrance, Vaulted Ceiling(s)
Appliances	Dishwasher, Garage Control(s), Range Hood, Refrigerator, Window Coverings, Central Air Conditioner, Dryer, Gas Range, Washer, Water Softener
Heating	Forced Air, Natural Gas
Cooling	Central Air
Fireplace	Yes
# of Fireplaces	1
Fireplaces	Gas, Three-Sided
Has Basement	Yes
Basement	Finished, Exterior Entry, See Remarks, Walk-Out

## Exterior

Exterior Features	BBQ gas line, Private Yard, Rain Barrel/Cistern(s)
Lot Description	Back Yard, Front Yard, Corner Lot
Roof	Asphalt Shingle
Construction	Vinyl Siding, Wood Frame
Foundation	Poured Concrete

## Additional Information

Date Listed	February 12th, 2025
Days on Market	65
Zoning	R1

## Listing Details

Listing Office	RE/MAX Key
----------------	------------

Data is supplied by Pillar 9â„¢ MLS® System. Pillar 9â„¢ is the owner of the copyright in its MLS® System. Data is deemed reliable but is not guaranteed accurate by Pillar 9â„¢. The trademarks MLS®, Multiple Listing Service® and the associated logos are owned by The Canadian Real Estate Association (CREA) and identify the quality of services provided by real estate professionals who are members of CREA. Used under license.