

# \$529,900 - 322 Sundown Road, Cochrane

MLS® #A2193822

**\$529,900**

3 Bedroom, 3.00 Bathroom, 1,262 sqft  
Residential on 0.06 Acres

Sunset Ridge, Cochrane, Alberta

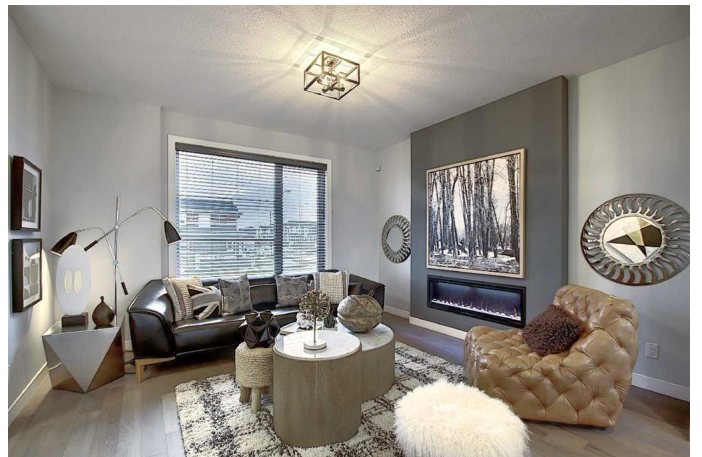
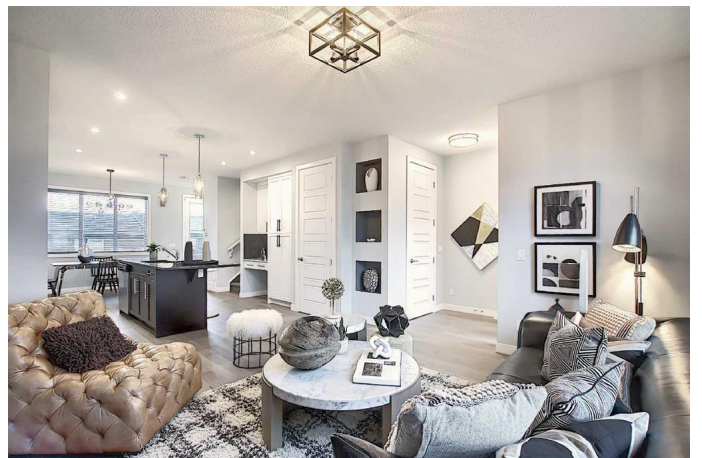
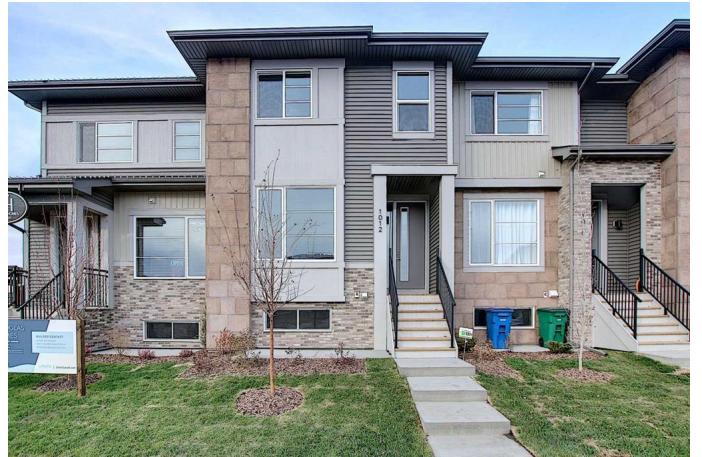
Terrific Value... Introducing the Stunning St. Andrews Model by Douglas Homes Master Builder... This exceptional End Unit townhome has 3 bedrooms and 2.5 bathrooms, offers the perfect blend of modern elegance and practical design—ideal for families, first-time buyers, or those looking to downsize without sacrificing quality.

Upon entering, you'll be welcomed by a spacious open-concept main floor with soaring 9' ceilings and large windows that flood the home with natural light, creating a warm, inviting atmosphere.

The main level is beautifully finished with engineered hardwood flooring that adds a touch of luxury throughout the space. The kitchen is a highlight, featuring premium builder's grade stainless steel appliances, sleek quartz countertops, and ample cabinet space, perfect for daily cooking or entertaining.

Adjacent to the kitchen is a bright and cozy dining nook, and a well-sized great room that flows seamlessly together for gatherings or family time.

Upstairs, the generously sized primary bedroom offers a private retreat, complete with a walk-in closet and a well-appointed ensuite. Two additional bedrooms, perfect for children,



guests, or a home office, share a full bathroom.

This model offers sought-after features such as no condo fees, a rear double detached garage, a treated wood deck, a front concrete pad, and fully landscaped front and rear yards, providing comfort and convenience in a low-maintenance package.

With its elegant finishes and thoughtful design, the St. Andrews Model is a great option for those making the leap from renting to owning, or anyone seeking an affordable yet high-quality home.

**\*\* Key Features:** | Townhouse | No Condo Fees | Rear Garage | Front Concrete Pad | 9' Main Floor Ceilings | Treated Wood Deck | Full Landscaping (Front & Back) | Quartz Countertops | Engineered Hardwood on Main Floor | Built-in Desk | This home will soon be move-in ready around spring of 2025, making it the perfect opportunity for those seeking a modern, low-maintenance lifestyle in the desirable Sunset Ridge community. \*\*\*\*\*  
Pictures from our St. Andrews Model Showhome. This listing has a slightly different interior finishing package than as shown in the pictures presented here. (Attention fellow agents: Please read the private remarks.)

Built in 2025

### **Essential Information**

MLS® #	A2193822
Price	\$529,900
Bedrooms	3
Bathrooms	3.00
Full Baths	2

Half Baths	1
Square Footage	1,262
Acres	0.06
Year Built	2025
Type	Residential
Sub-Type	Row/Townhouse
Style	2 Storey
Status	Active

### **Community Information**

Address	322 Sundown Road
Subdivision	Sunset Ridge
City	Cochrane
County	Rocky View County
Province	Alberta
Postal Code	T4C 3H2

### **Amenities**

Amenities	None
Parking Spaces	2
Parking	Double Garage Detached
# of Garages	2

### **Interior**

Interior Features	Closet Organizers, Kitchen Island, Pantry, Quartz Counters, Walk-In Closet(s)
Appliances	Dishwasher, Electric Stove, Microwave Hood Fan, Refrigerator
Heating	Forced Air, Natural Gas
Cooling	None
Has Basement	Yes
Basement	Full, Unfinished

### **Exterior**

Exterior Features	Lighting
Lot Description	Landscaped
Roof	Asphalt Shingle
Construction	Wood Frame
Foundation	Poured Concrete

### **Additional Information**

Date Listed	February 11th, 2025
Days on Market	57
Zoning	R-MD
HOA Fees	153
HOA Fees Freq.	ANN

### **Listing Details**

Listing Office           MaxWell Canyon Creek

Data is supplied by Pillar 9â„¢ MLSÂ® System. Pillar 9â„¢ is the owner of the copyright in its MLSÂ® System. Data is deemed reliable but is not guaranteed accurate by Pillar 9â„¢. The trademarks MLSÂ®, Multiple Listing ServiceÂ® and the associated logos are owned by The Canadian Real Estate Association (CREA) and identify the quality of services provided by real estate professionals who are members of CREA. Used under license.