

\$529,900 - 256 Waterford Heath, Chestermere

MLS® #A2166734

\$529,900

3 Bedroom, 3.00 Bathroom, 1,214 sqft
Residential on 0.07 Acres

NONE, Chestermere, Alberta

\$20,000 discount!!!**IMMEDIATE POSSESSION **Welcome to this stunning single detached home, where modern elegance meets functional design. Featuring a convenient side entrance and an array of high-end finishes, this property is ideal for families and entertaining.

Key Features:

Elegant Engineered Hardwood Floors: The main floor boasts beautiful engineered hardwood flooring, adding warmth and sophistication to your living space.

Spacious 9 ft Ceilings: Enjoy an open and airy atmosphere with impressive 9-foot ceilings that enhance the overall design.

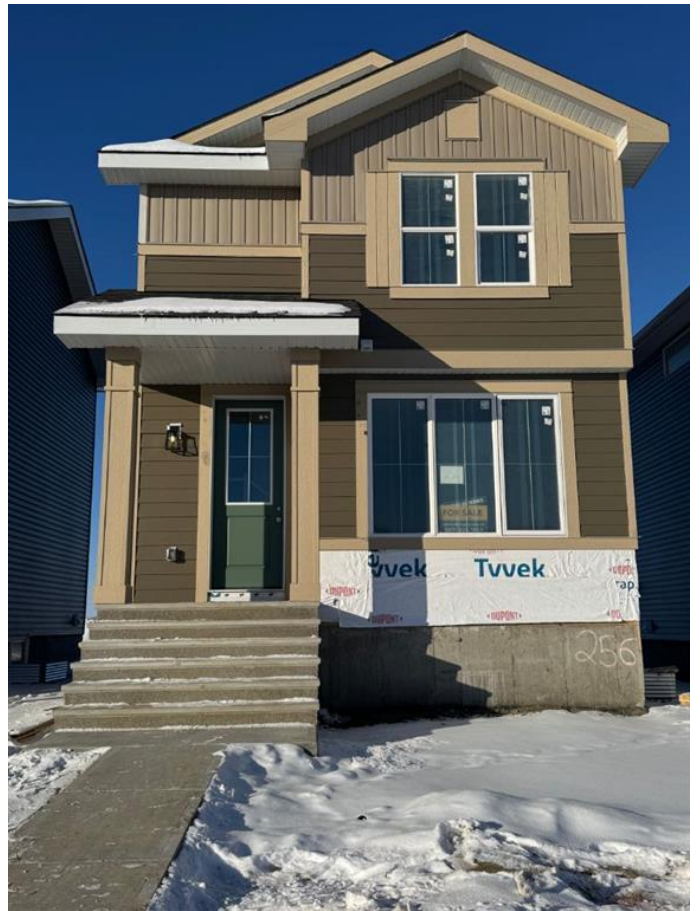
Grand 8 ft Doors: Stylish 8-foot doors on the main floor provide a grand entry and seamless flow between rooms.

Sophisticated Wrought Iron Railings: Tasteful wrought iron railings add a touch of class and safety to the home.

Cozy Electric Fireplace: Relax in the inviting living area, featuring a contemporary electric fireplace that creates a warm ambiance.

Master Bedroom Retreat: The spacious master suite includes a luxurious ensuite with a stand-up tiled shower and a generous walk-in closet for ultimate convenience.

Two Well-Sized Bedrooms: Two additional bedrooms offer ample space for family or guests, making this home perfect for any lifestyle.



Gourmet Kitchen with Quartz Countertops: Enjoy modern quartz countertops and undermount sinks that provide both style and functionality in the kitchen and bathrooms. Practical Built-In Hooks and Shelf: The rear entry features built-in hooks and a shelf, perfect for keeping your belongings organized. Art Niche: Showcase your unique style with an art niche, ideal for displaying your favorite pieces. Rear pad: 20x20 concrete pad for future garage. This exceptional home perfectly balances modern living with elegant design. Don't miss out on the chance to make it yours! Contact us today to schedule your private showing!

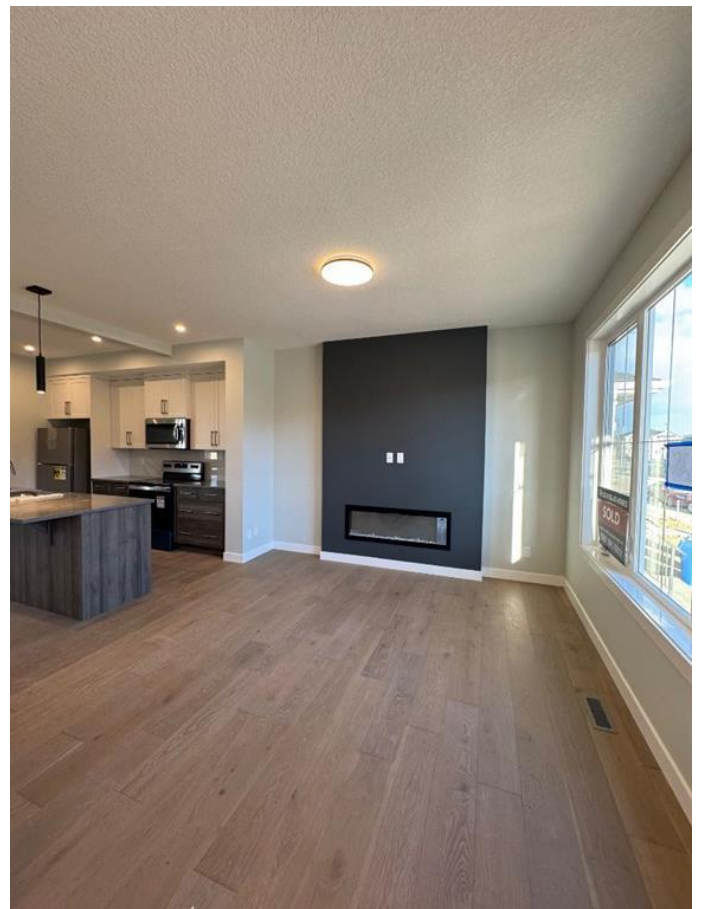
Built in 2025

Essential Information

MLS® #	A2166734
Price	\$529,900
Bedrooms	3
Bathrooms	3.00
Full Baths	2
Half Baths	1
Square Footage	1,214
Acres	0.07
Year Built	2025
Type	Residential
Sub-Type	Detached
Style	2 Storey
Status	Active

Community Information

Address	256 Waterford Heath
Subdivision	NONE
City	Chestermere
County	Chestermere



Province Alberta
Postal Code T1X 2T8

Amenities

Parking Spaces 2
Parking Parking Pad

Interior

Interior Features High Ceilings, Kitchen Island, Quartz Counters, Separate Entrance, Walk-In Closet(s)
Appliances Dishwasher, Electric Stove, Microwave Hood Fan, Refrigerator
Heating Forced Air
Cooling None
Fireplace Yes
of Fireplaces 1
Fireplaces Electric
Has Basement Yes
Basement Full, Unfinished

Exterior

Exterior Features None
Lot Description Back Lane, City Lot, Level, Rectangular Lot, Street Lighting
Roof Asphalt Shingle
Construction Mixed, Vinyl Siding
Foundation Poured Concrete

Additional Information

Date Listed September 17th, 2024
Days on Market 200
Zoning R-1PRL

Listing Details

Listing Office First Place Realty

Data is supplied by Pillar 9â„¸ MLSÂ® System. Pillar 9â„¸ is the owner of the copyright in its MLSÂ® System. Data is deemed reliable but is not guaranteed accurate by Pillar 9â„¸. The trademarks MLSÂ®, Multiple Listing ServiceÂ® and the associated logos are owned by The Canadian Real Estate Association (CREA) and identify the quality of services provided by real estate professionals who are members of CREA. Used under license.